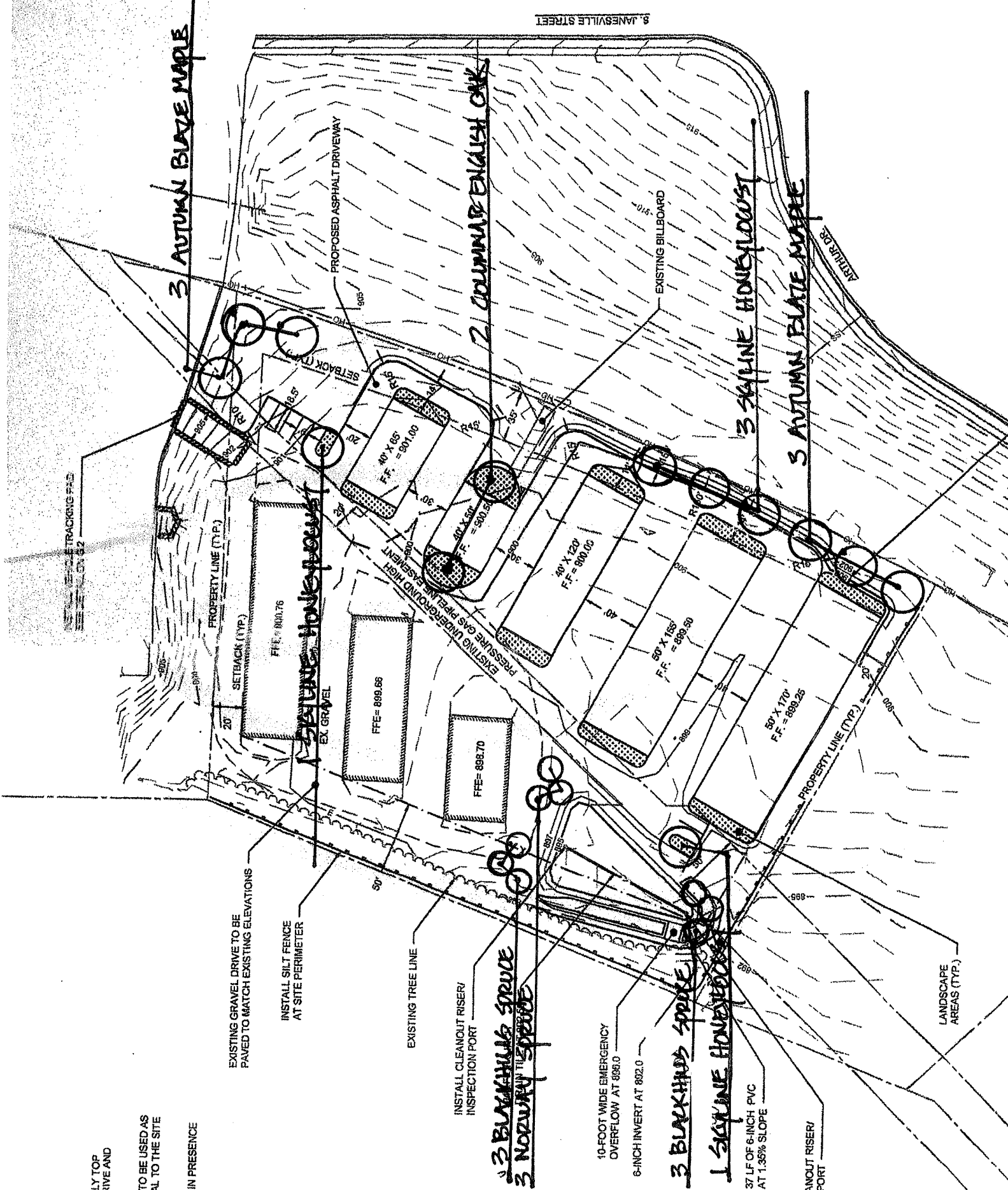


NOTE
 PARK
 1 PAR
 APPR
 ALL P
 ALL D
 PROP
 AREA
 PROP
 PROP
 PROP
 EXIST
 EXIST
 EXIST
 OPEN
 SITE/
 PROP
 PROP
 PROP
 EXIST
 EXIST
 EXIST
 DRIVE
 OPEN
 TOTAL
 PERCI



LY TOP
 VE AND
 TO BE USED AS
 AL TO THE SITE
 IN PRESENCE

3 BLACKHILLS SPRUCE
 3 NORWAY SPRUCE

3 BLACKHILLS SPRUCE
 1 SAILOR HONEYLOCUST

37 LF OF 6-INCH PVC
 AT 1.35% SLOPE

CLEANOUT RISER/
 PORT

3 AUTUMN BLAZE MAPLE

2 COLUMNAR ENGLISH OAK

3 SAILOR HONEYLOCUST

3 AUTUMN BLAZE MAPLE

3 SAILOR HONEYLOCUST

3 BLACKHILLS SPRUCE
 3 NORWAY SPRUCE

3 BLACKHILLS SPRUCE
 1 SAILOR HONEYLOCUST

37 LF OF 6-INCH PVC
 AT 1.35% SLOPE

CLEANOUT RISER/
 PORT

9. JANEVILLE STREET

10. ACTIVE DR.

LANDSCAPE
 AREAS (TYP.)

EXISTING GRAVEL DRIVE TO BE
 PAVED TO MATCH EXISTING ELEVATIONS

INSTALL SILT FENCE
 AT SITE PERIMETER

EXISTING TREE LINE

INSTALL CLEANOUT RISER/
 INSPECTION PORT

10-FOOT WIDE EMERGENCY
 OVERFLOW AT 888.0

6-INCH INVERT AT 882.0

CLEANOUT RISER/
 PORT

PROPERTY LINE (TYP.)

SETBACK (TYP.)

FFE = 880.76

EX GRAVEL

FFE = 889.66

FFE = 888.70

EXISTING UNDERGROUND HIGH
 PRESSURE GAS PIPELINE EASEMENT

40' X 85'
 F.F. = 891.00

40' X 80'
 F.F. = 890.30

40' X 120'
 F.F. = 890.00

50' X 125'
 F.F. = 889.50

50' X 170'
 F.F. = 889.25

PROPERTY LINE (TYP.)

SETBACK (TYP.)

EXISTING BILLBOARD

PROPOSED ASPHALT DRIVEWAY

SETBACK (TYP.)

SETBACK (TYP.)

SETBACK (TYP.)

SETBACK (TYP.)

SETBACK (TYP.)

SETBACK (TYP.)

SETBACK (TYP.)

SETBACK (TYP.)

SETBACK (TYP.)

SETBACK (TYP.)

SETBACK (TYP.)

SETBACK (TYP.)

SETBACK (TYP.)

SETBACK (TYP.)

SETBACK (TYP.)

SETBACK (TYP.)

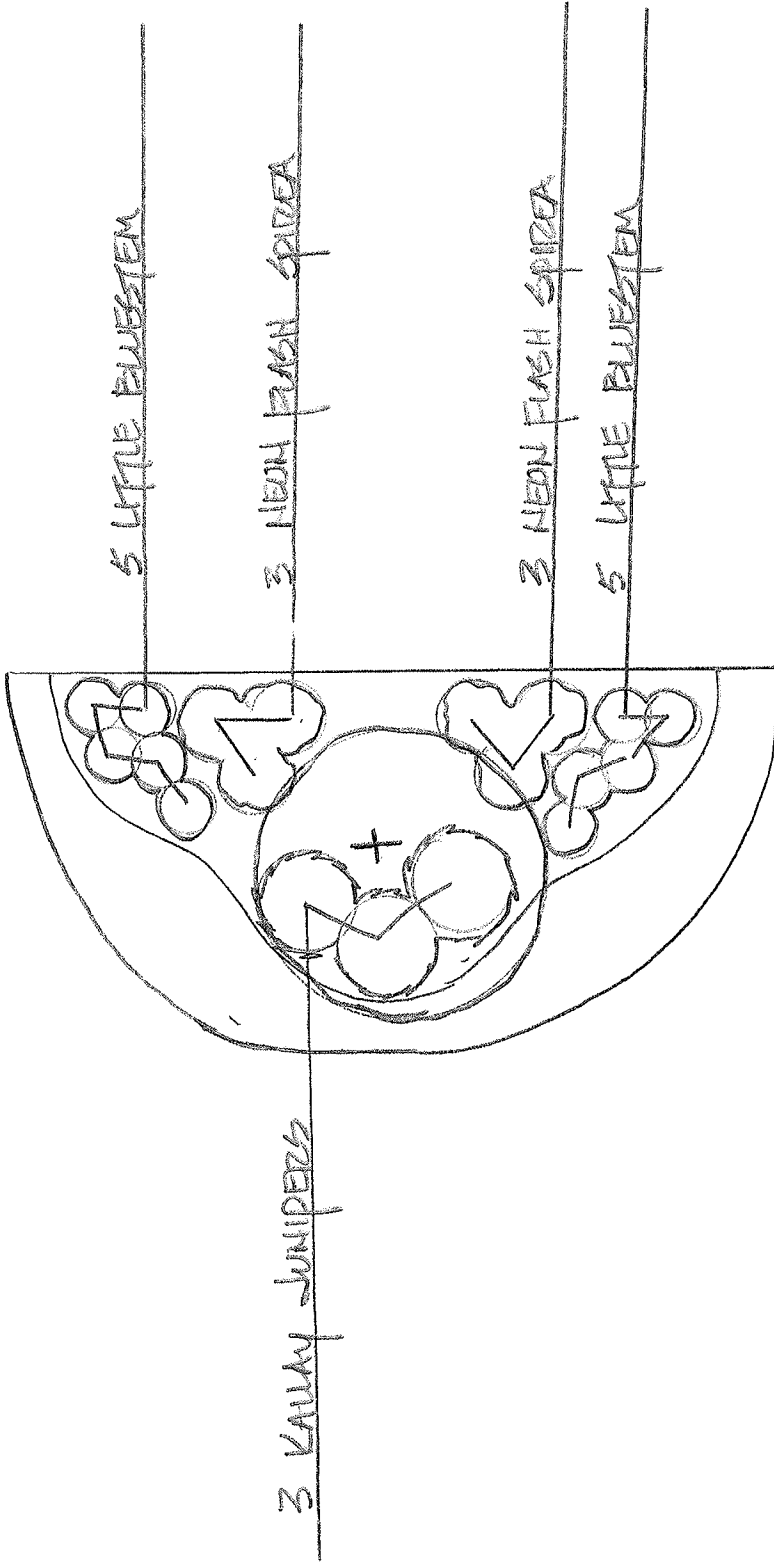
SETBACK (TYP.)

SETBACK (TYP.)

SETBACK (TYP.)

SETBACK (TYP.)

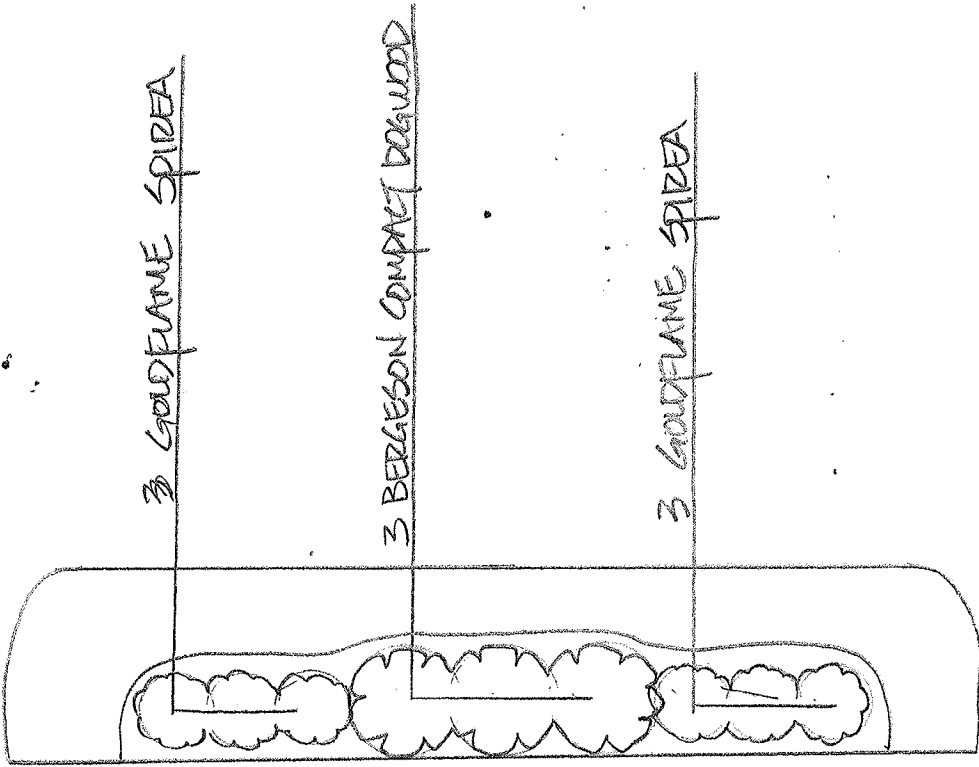
SETBACK (TYP.)



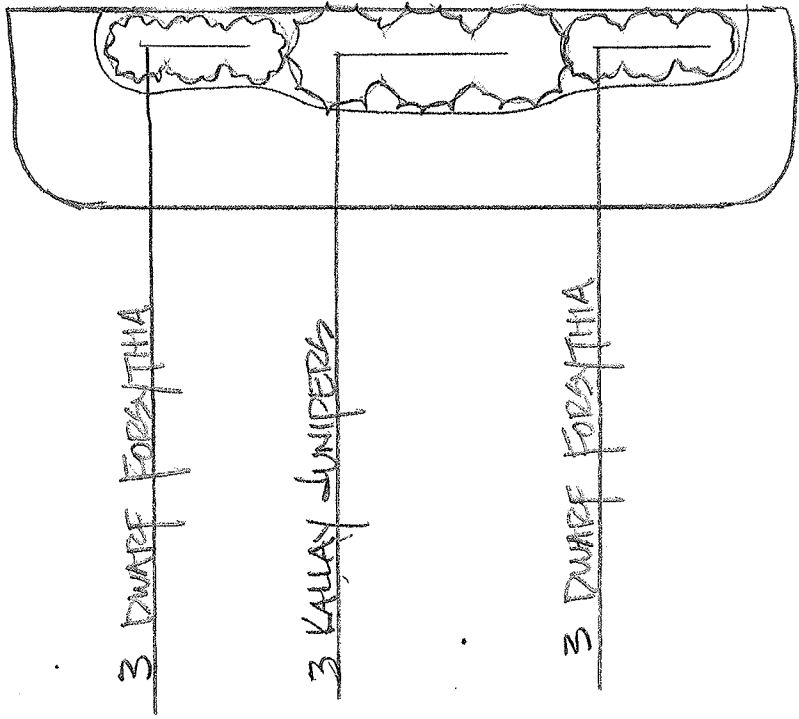
TYPICAL 40' BED (2 BEDS)

220 POINTS EACH = 440 TOTAL

SCALE: 1" = 10'-0"



TYPICAL 50' BED (4 BEDS)
 80 POINTS EACH = 320 POINTS



TYPICAL 40' BED (4 BEDS)
 80 POINTS EACH = 320 POINTS

SCALE: 1" = 10'-0"

TYPICAL 50' BEDS	320 POINTS
TYPICAL 40' BEDS	320 POINTS
TYPICAL 40' BEDS	440 POINTS
9 EVERGREENS	540 POINTS
13 TREES	1950 POINTS
14 TREES IN TREE LINE	2100 POINTS

5670 POINTS

5699 POINTS REQUIRED