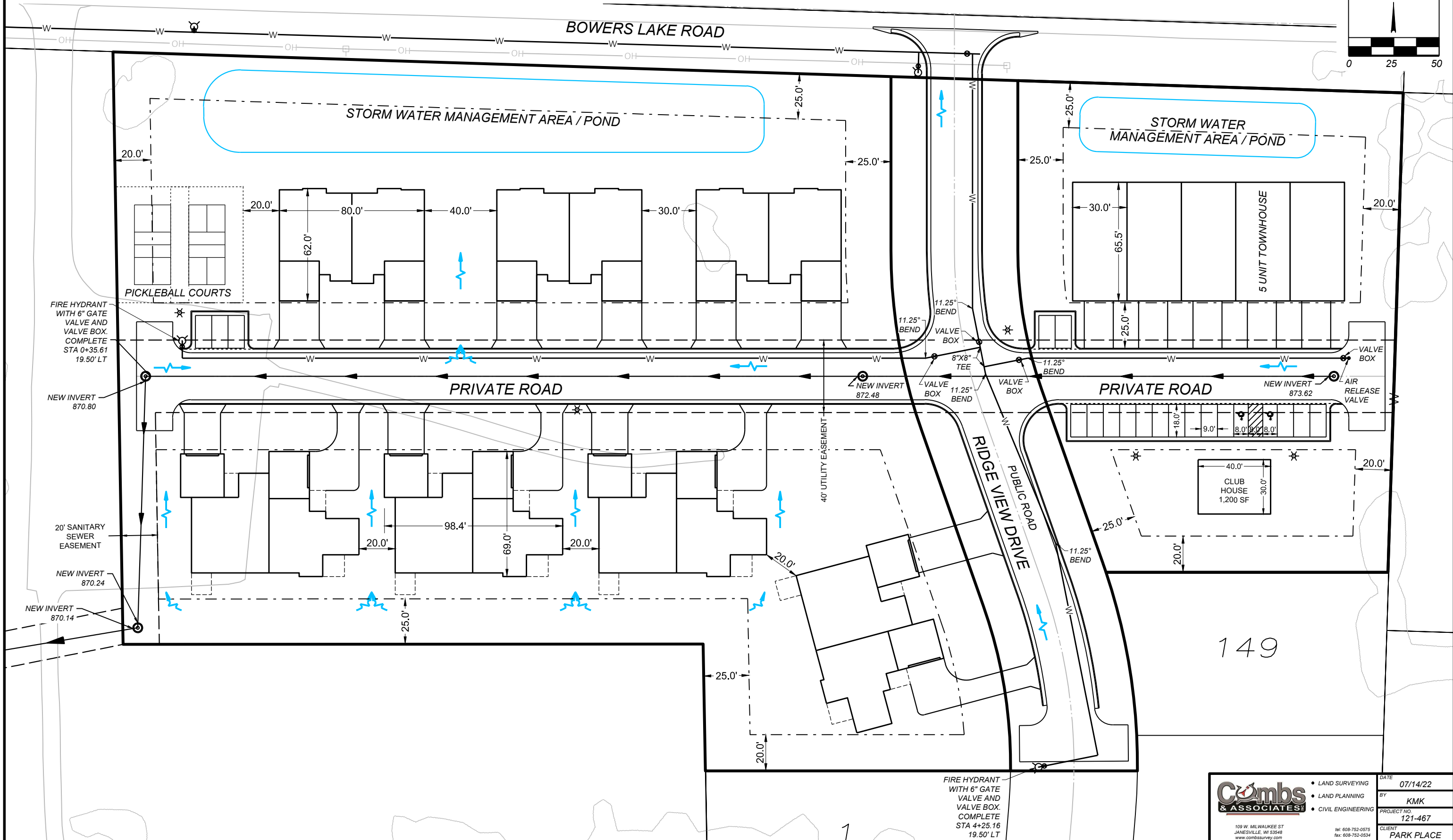
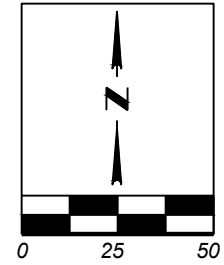


# SITE LAYOUT

PART OF SECTION 26, T.4N., R.13E., OF THE 4TH P.M., CITY OF MILTON, ROCK COUNTY, WISCONSIN.



149

FIRE HYDRANT WITH 6" GATE VALVE AND VALVE BOX. COMPLETE STA 4+25.16 19.50' LT

<p>109 W. MILWAUKEE ST JANESVILLE, WI 53548 www.combsurvey.com</p>	<ul style="list-style-type: none"> <li>• LAND SURVEYING</li> <li>• LAND PLANNING</li> <li>• CIVIL ENGINEERING</li> </ul>	DATE 07/14/22
		BY KMK
		PROJECT NO. 121-467
		CLIENT PARK PLACE