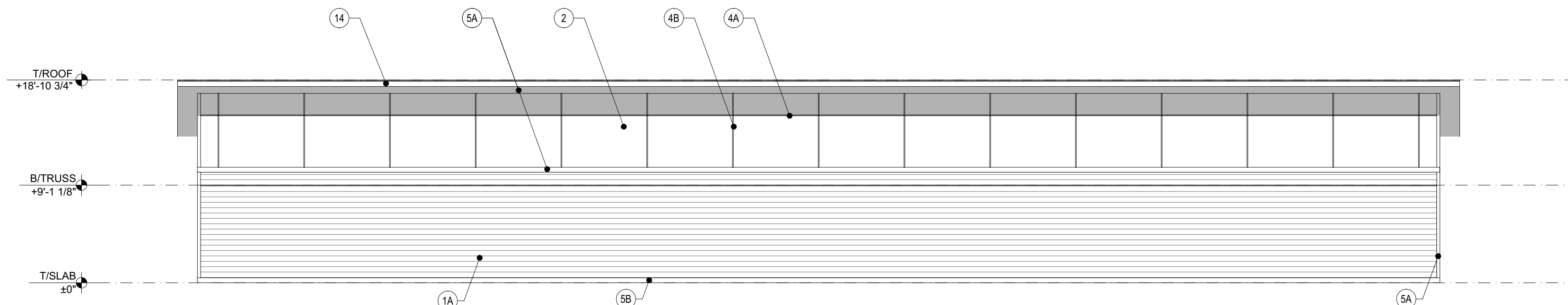


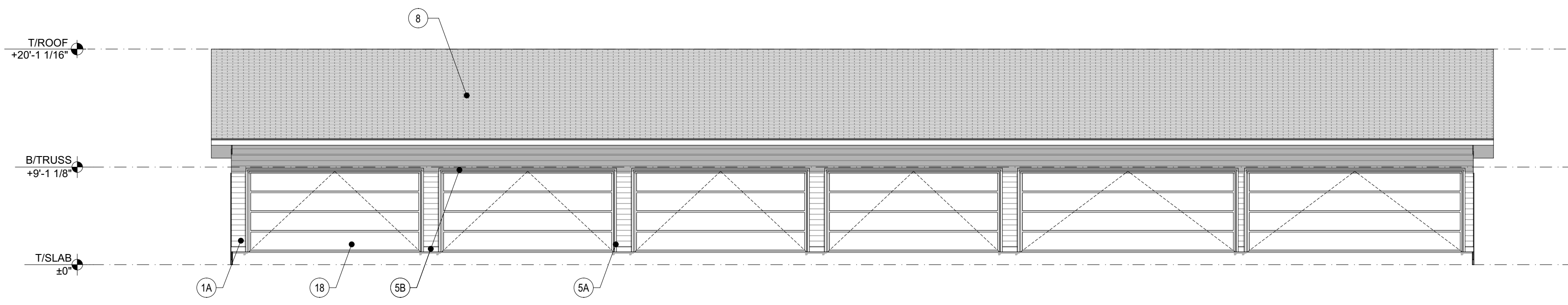
1 SINGLE LOADED GARAGE - FRONT ELEVATION

SCALE: 1/8" = 1'-0"



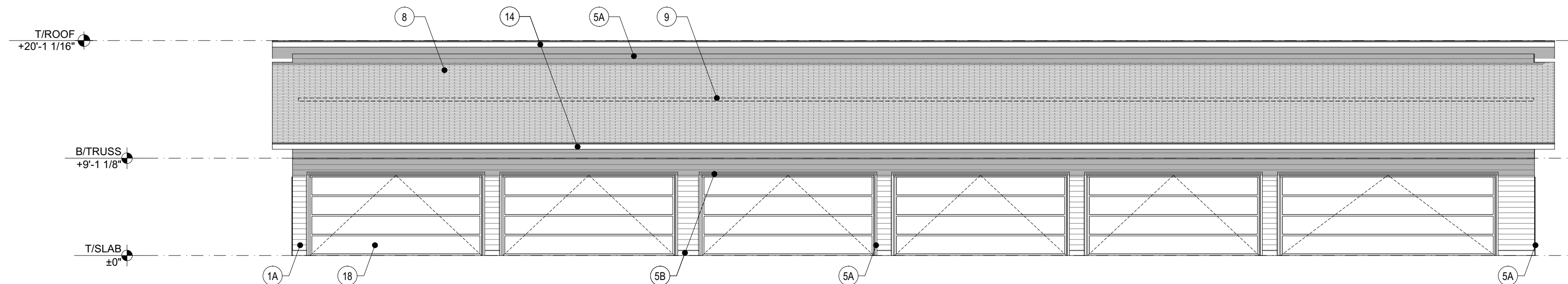
3 SINGLE LOADED GARAGE- REAR ELEVATION

SCALE: 1/8" = 1'-0"



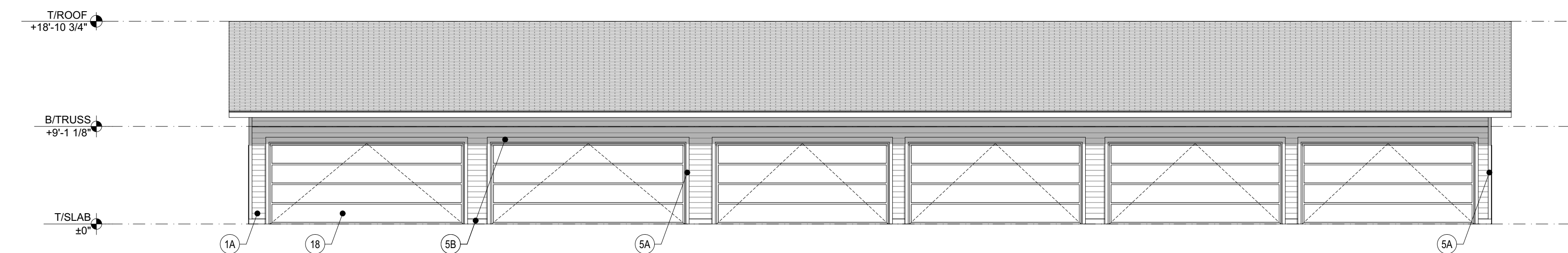
5 DOUBLE LOADED GARAGE - REAR ELEVATION

SCALE: 1/8" = 1'-0"



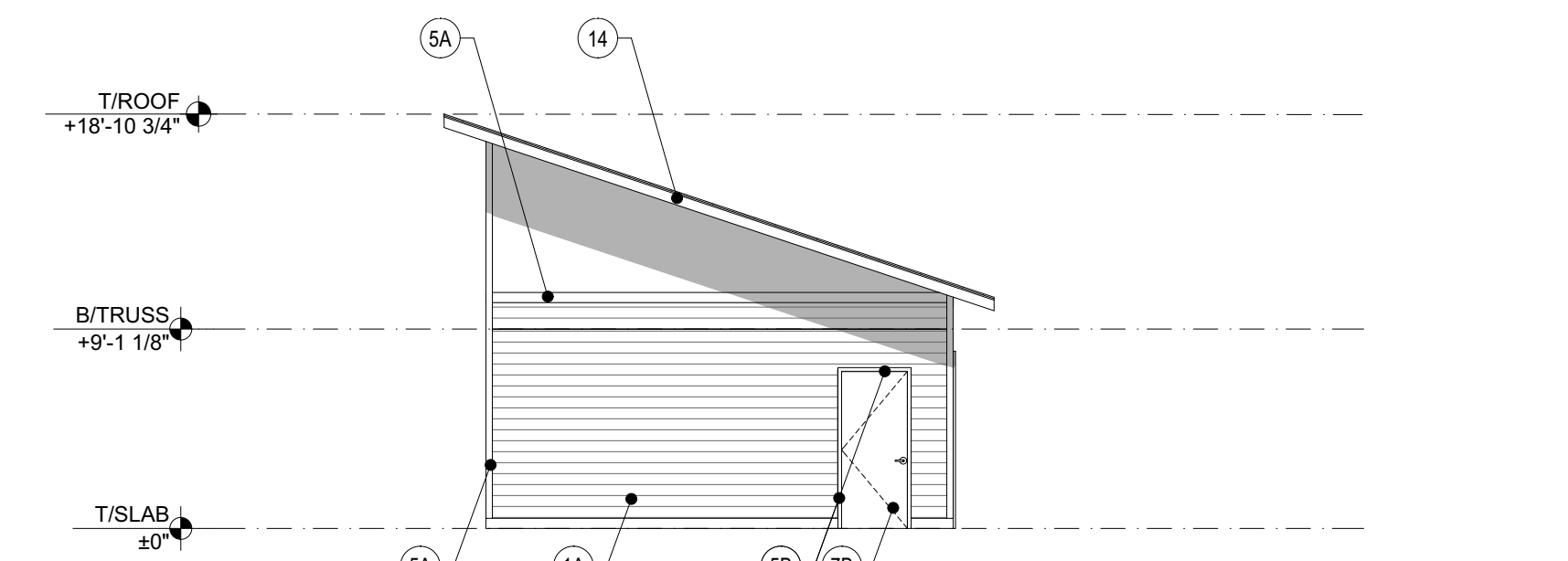
6 DOUBLE LOADED GARAGE (ACCESSIBLE) - FRONT ELEVATION

SCALE: 1/8" = 1'-0"



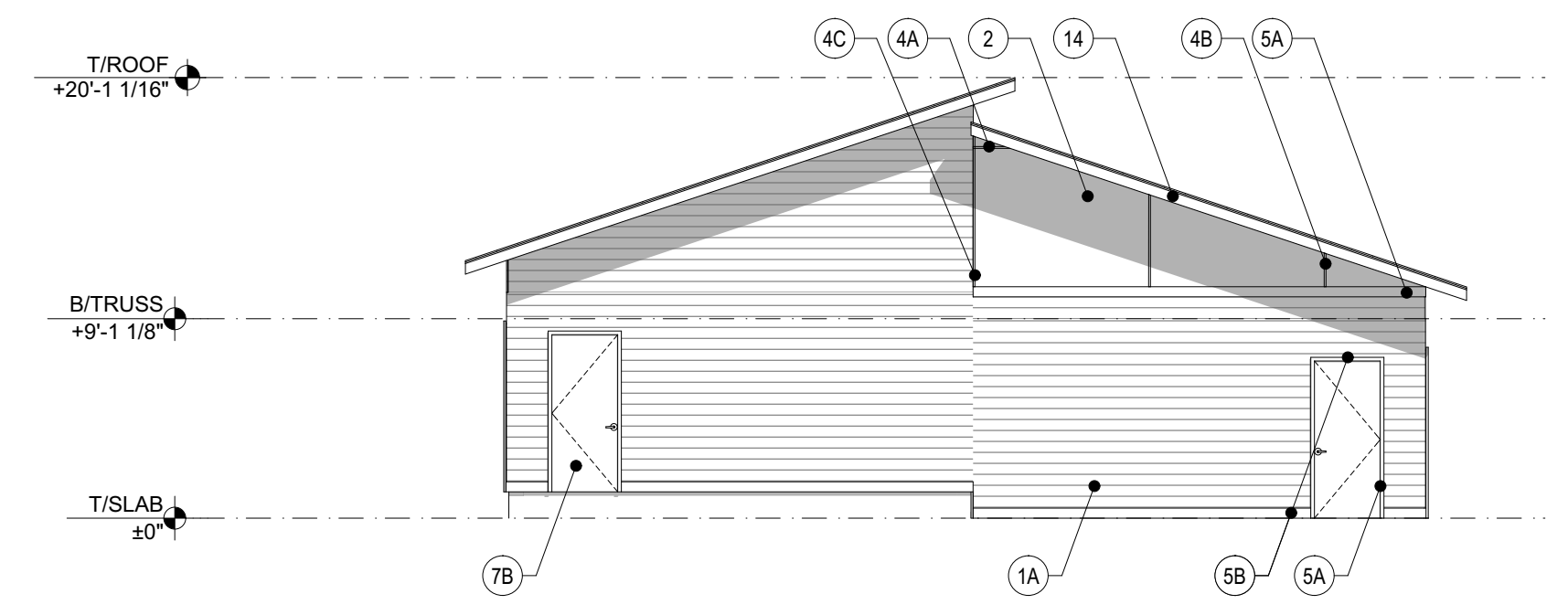
7 SINGLE LOADED GARAGE - FRONT ELEVATION

SCALE: 1/8" = 1'-0"



2 SINGLE LOADED GARAGE- SIDE ELEVATION

SCALE: 1/8" = 1'-0"



4 DOUBLE LOADED GARAGE -SIDE ELEVATION

SCALE: 1/8" = 1'-0"

- GENERAL NOTES**
- ELEVATION TAGS INDICATE TOP OF LIGHTWEIGHT TOPPING ON FLOOR SHEATHING, T/PLYWOOD SHEATHING ON ROOF DECK, OR TOP OF SLAB ON GRADE AT FIRST FLOOR, U.N.O.
 - ROOF ELEVATIONS VARY-SEE ROOF PLAN.
 - SEE INDICATED SECTIONS AND DETAILS FOR FULL REQUIREMENTS AT EACH CONDITION.
 - BOTTOM OF FOOTING SHALL ALWAYS BE MIN. 4'-0" BELOW FINISHED ADJACENT GRADE. SEE CIVIL AND STRUCTURAL.
 - SEE EXTERIOR WALL INSULATION, AIR SEALING/CLEANING, AND ADDITIONAL WALL, FLOOR AND CEILING NOTES ON A3.1.

- ELEVATION MATERIAL KEY**
- | | |
|---|--|
| <p>1A - JAMES HARDIE "HARDIEPLANK" COLOR #1: FIBER CEMENT LAM SIDING, SMOOTH FINISH COLORPLUS, 4" EXPOSURE
- COLOR(S) BY ARCH. FROM MANUF. FULL RANGE</p> <p>1B - JAMES HARDIE "HARDIEPLANK" COLOR #2
- SAME AS 1A - COLOR(S) BY ARCH.</p> <p>2 - JAMES HARDIE "HARDIEPANEL" COLOR #1: FIBER CEMENT PANEL SIDING, SMOOTH FINISH COLORPLUS
- COLOR(S) BY ARCH. FROM MANUF. FULL RANGE</p> <p>3 - JAMES HARDIE "HARDIEPANEL" - VERTICAL SIDING
COLOR #1: FIBER CEMENT PANEL SIDING, SMOOTH FINISH COLORPLUS
- COLOR(S) BY ARCH. FROM MANUF. FULL RANGE</p> <p>4A - TAMLYN XTREME TRIM - ALUMINUM - HORIZONTAL (BRH) BEAD REVEAL
- COLOR BY ARCH FROM MANUF. FULL RANGE</p> <p>4B - TAMLYN XTREME TRIM - ALUMINUM - VERTICAL (BRV) BEAD REVEAL - 1/2" REVEAL
- COLOR BY ARCH FROM MANUF. FULL RANGE</p> <p>4C - TAMLYN XTREME TRIM - ALUMINUM - REVEAL OPEN OUTSIDE CORNER (XCORN) - MINIMUM FACE
- COLOR BY ARCH FROM MANUF. FULL RANGE</p> <p>5A - 3 1/2" FIBER CEMENT TRIM BOARD - JAMES HARDIE 5/4 "HARDIETRIM" NT3 BOARDS, SMOOTH FINISH
- COLOR(S) BY ARCH. FROM MANUF. FULL RANGE</p> <p>5B - 5 1/2" FIBER CEMENT TRIM BOARD - JAMES HARDIE 5/4 "HARDIETRIM" NT3 BOARDS, SMOOTH FINISH
- COLOR(S) BY ARCH. FROM MANUF. FULL RANGE</p> <p>6 - PRE-FINISHED CASEMENT WINDOW UNIT - SEE WINDOW SCHEDULE</p> <p>6A - PRE-FINISHED FIXED WINDOW UNIT - SEE WINDOW SCHEDULE</p> <p>7A - PRE-FINISHED ALUMINUM STOREFRONT GLASS DOOR W/ SIDELIGHT AND TRANSOM
- SEE DOOR SCHEDULE</p> <p>7B - INSUL. STEEL SERVICE DOOR
- SEE DOOR SCHEDULE</p> | <p>7C - PRE-FINISHED FIBERGLASS SLIDING ENTRY DOOR
- SEE DOOR SCHEDULE</p> <p>7D - PRE-FINISHED FIBERGLASS ENTRY DOOR W/ SIDELIGHT
- SEE DOOR SCHEDULE</p> <p>7E - PRE-FINISHED ALUMINUM STOREFRONT GLASS DOOR W/ TRANSOM
- SEE DOOR SCHEDULE</p> <p>8 - ASPHALT SHINGLE ROOFING - COLOR BY ARCH.
- SEE ROOF PLAN</p> <p>9 - PRE-FINISHED GABLE VENT/MID-SLOPE VENT
- COLOR TO MATCH ASPHALT SHINGLE ROOFING</p> <p>10 - PRE-FINISHED ALUMINUM GUTTER AND DOWNSPOUT - COLOR BY ARCH. -SEE ROOF PLAN</p> <p>11 - PT WOOD COLUMN CLAD IN JAMES HARDIE "HARDIE PANEL" - FIBER CEMENT PANEL SIDING, SMOOTH FINISH COLORPLUS
- SEE STRUCTURAL AND ARCHITECTURAL DETAILS
- COLOR(S) BY ARCH. FROM MANUF. FULL RANGE</p> <p>11A - STAINED WOOD COLUMN
- SEE STRUCTURAL AND ARCHITECTURAL DETAILS
- COLOR(S) BY ARCH. FROM MANUF. FULL RANGE</p> <p>12 - STAINED CEDAR BALCONY W/ INSET METAL WIRE MESH PANEL
- WOOD STAIN COLOR BY ARCH FROM MANUF. FULL RANGE
- METAL MESH FINISH BY ARCH.</p> <p>13 - WALL MOUNTED LIGHT FIXTURE - SEE ELECTRICAL & REFL. CEILING PLANS</p> <p>14 - PREFINISHED METAL COPING, FASCIA, & TRIM
- FINISH BY ARCH. FROM MANUF. FULL RANGE.</p> <p>15 - PROJECTING CANOPY</p> <p>16 - STAINED CEDAR TRELIS</p> <p>17 - CONCRETE LOW WALL WITH INTEGRATED STAINED CEDAR BENCH</p> <p>18 - GARAGE DOOR
- SEE DOOR SCHEDULE</p> <p>19 - RAIN CHAIN</p> <p>20 - PAINTED ALUMINUM CHIMNEY FLUE PAINTED
- HEAT RESISTANT PAINT. COLOR BY ARCH. FROM</p> |
|---|--|

RED HAWK APARTMENTS

N. Parkview Drive & Blanche Drive
Milton, WI 53563

WORN JERABEK WILTSE ARCHITECTS, P.C.

401 West Superior St, Suite 400
Chicago, IL 60654

PH: 312.642.5587 FAX: 312.642.4189 www.wjwarchitecture.com

NO.	ISSUED FOR:	DATE
1	100% DESIGN DEVELOPMENT	08/12/19

NOT FOR CONSTRUCTION

ILLINOIS PROFESSIONAL DESIGN FIRM LICENSE #184.002955
© 2019 WORN JERABEK WILTSE ARCHITECTS, P.C.

STAMP		PROJECT NUMBER:	SHEET NUMBER:
		18836	A4.5
DR. BY:	CK. BY:		
CC & JMK	DZ		
EXPIRATION DATE: 11.30.2020			