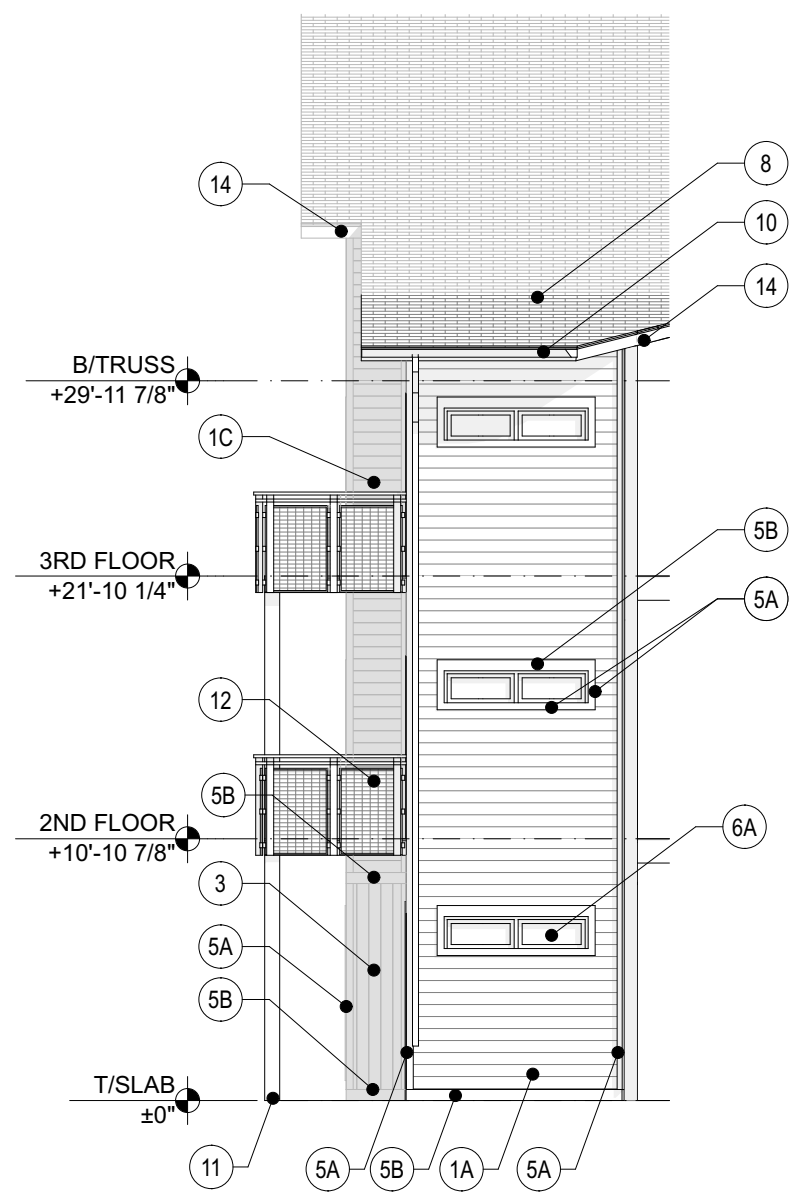
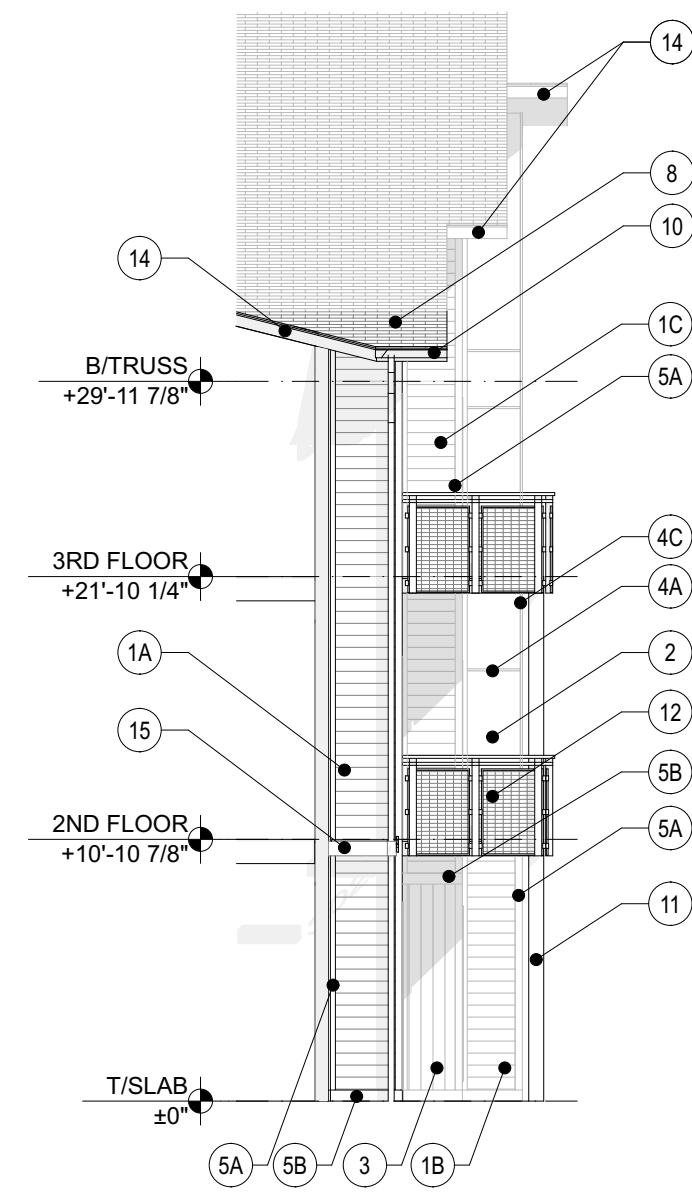


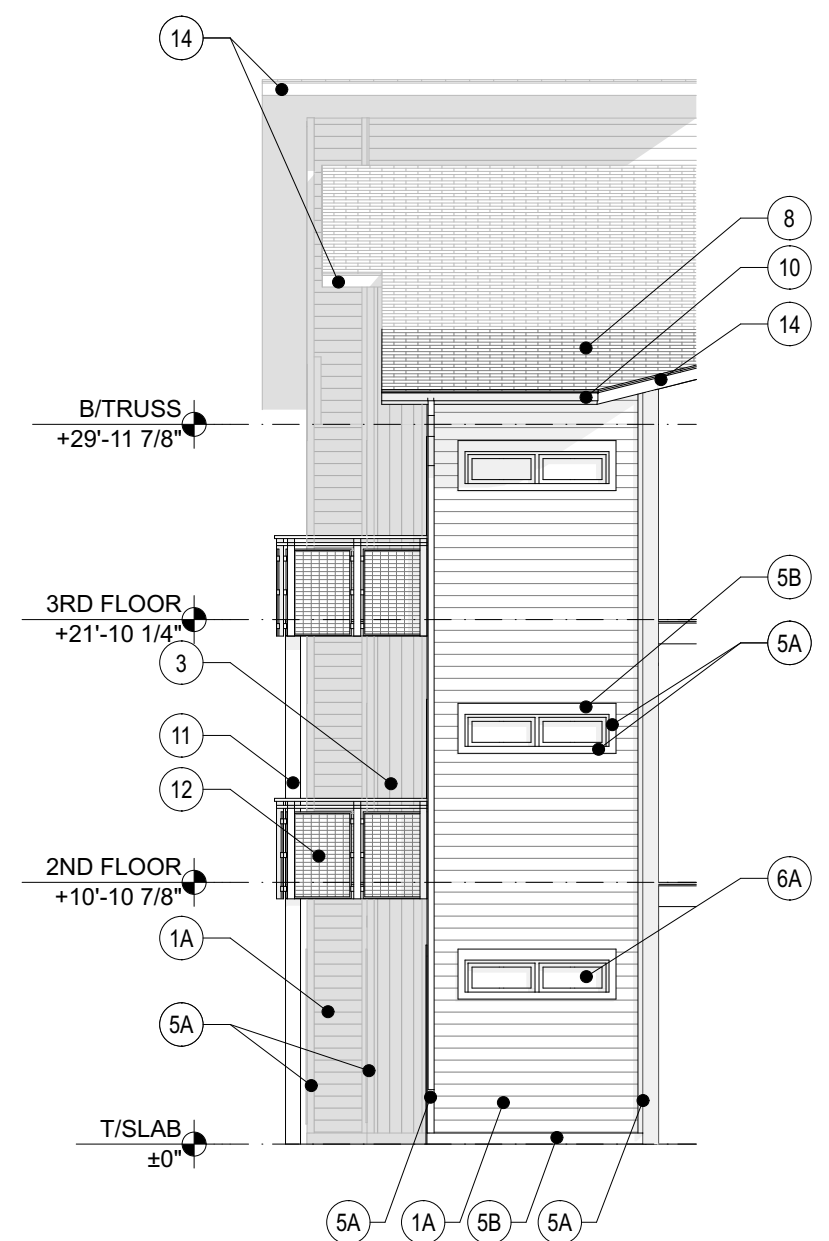
A APARTMENT - ENTRY ELEVATION 1
SCALE: 1/8" = 1'-0"



B APARTMENT - ELEVATION (CENTER)
SCALE: 1/8" = 1'-0"



C APARTMENT - ENTRY ELEVATION (CENTER)
SCALE: 1/8" = 1'-0"



D APARTMENT - ELEVATION
SCALE: 1/8" = 1'-0"

ELEVATION MATERIAL KEY	
1A - JAMES HARDIE "HARDIEPLANK" COLOR #1; FIBER CEMENT LAP SIDING, SMOOTH FINISH COLORPLUS, 4" EXPOSURE - COLOR(S) BY ARCH. FROM MANUF. FULL RANGE	7C - PRE-FINISHED FIBERGLASS SLIDING ENTRY DOOR - SEE DOOR SCHEDULE
1B - JAMES HARDIE "HARDIEPLANK" COLOR #2 - SAME AS 1A - COLOR(S) BY ARCH.	7D - PRE-FINISHED FIBERGLASS ENTRY DOOR W/ SIDELIGHT - SEE DOOR SCHEDULE
1C - NICHHA "VINTAGE WOOD" COLOR #1 - COLOR(S) BY ARCH.	7E - PRE-FINISHED ALUMINUM STOREFRONT GLASS DOOR W/ TRANSOM - SEE DOOR SCHEDULE
2 - JAMES HARDIE "HARDIEPANEL" COLOR #1; FIBER CEMENT PANEL SIDING, SMOOTH FINISH COLORPLUS - COLOR(S) BY ARCH. FROM MANUF. FULL RANGE	8 - ASPHALT SHINGLE ROOFING - COLOR BY ARCH. - SEE ROOF PLAN
3 - JAMES HARDIE "HARDIEPANEL" "VERTICAL SIDING" COLOR #1; FIBER CEMENT PANEL SIDING, SMOOTH FINISH COLORPLUS - COLOR(S) BY ARCH. FROM MANUF. FULL RANGE	9 - PRE-FINISHED GABLE VENT/MID-SLOPE VENT - COLOR TO MATCH ASPHALT SHINGLE ROOFING
4A - TAMLYN XTREME TRIM - ALUMINUM - HORIZONTAL (BRH) BEAD REVEAL - COLOR BY ARCH FROM MANUF. FULL RANGE	10 - PRE-FINISHED ALUMINUM GUTTER AND DOWNSPOUT - COLOR BY ARCH. -SEE ROOF PLAN
4B - TAMLYN XTREME TRIM - ALUMINUM - VERTICAL (BRV) BEAD REVEAL, 1/2" REVEAL - COLOR BY ARCH FROM MANUF. FULL RANGE	11 - PT WOOD COLUMN CLAD IN JAMES HARDIE "HARDIE PANNEL" - FIBER CEMENT PANEL SIDING, SMOOTH FINISH COLORPLUS - SEE STRUCTURAL AND ARCHITECTURAL DETAILS - COLOR(S) BY ARCH. FROM MANUF. FULL RANGE
4C - TAMLYN XTREME TRIM - ALUMINUM - REVEAL OPEN OUTSIDE CORNER (XOCRMI) - MINIMUM FACE - COLOR BY ARCH FROM MANUF. FULL RANGE	11A - STAINED WOOD COLUMN - SEE STRUCTURAL AND ARCHITECTURAL DETAILS - COLOR(S) BY ARCH. FROM MANUF. FULL RANGE
5A - 3 1/2" FIBER CEMENT TRIM BOARD - JAMES HARDIE 5/8" "HARDIE TRIM" NTG BOARDS, SMOOTH FINISH - COLOR(S) BY ARCH. FROM MANUF. FULL RANGE	12 - STAINED CEDAR BALCONY W/ INSET METAL WIRE MESH PANEL - WOOD STAIN COLOR BY ARCH FROM MANUF. FULL RANGE - METAL MESH FINISH BY ARCH.
5B - 5 1/2" FIBER CEMENT TRIM BOARD - JAMES HARDIE 5/8" "HARDIE TRIM" NTG BOARDS, SMOOTH FINISH - COLOR(S) BY ARCH. FROM MANUF. FULL RANGE	13 - WALL MOUNTED LIGHT FIXTURE - SEE ELECTRICAL & REFL. CEILING PLANS
6 - PRE-FINISHED CASEMENT WINDOW UNIT - SEE WINDOW SCHEDULE	14 - PRE-FINISHED METAL COPING, FASCIA, & TRIM - FINISH BY ARCH. FROM MANUF. FULL RANGE
6A - PRE-FINISHED FIXED WINDOW UNIT - SEE WINDOW SCHEDULE	15 - PROJECTING CANOPY
6B - PRE-FINISHED CASEMENT WINDOW UNIT WITH FIXED UPPER TRANSOM - SEE WINDOW SCHEDULE	16 - STAINED CEDAR TRELLIS
7A - PRE-FINISHED ALUMINUM STOREFRONT GLASS DOOR W/ SIDELIGHT AND TRANSOM - SEE DOOR SCHEDULE	17 - CONCRETE LOW WALL WITH INTEGRATED STAINED CEDAR BENCH
7B - INSUL. STEEL SERVICE DOOR - SEE DOOR SCHEDULE	18 - GARAGE DOOR - SEE DOOR SCHEDULE
	19 - RAIN CHAIN
	20 - PAINTED ALUMINUM CHIMNEY FLUE PAINTED - HEAT RESISTANT PAINT, COLOR BY ARCH. FROM MANUF. FULL RANGE.

GENERAL NOTES

- ELEVATION TAGS INDICATE TOP OF LIGHTWEIGHT TOPPING ON FLOOR SHEATHING, T/PLYWOOD SHEATHING ON ROOF DECK, OR TOP OF SLAB ON GRADE AT FIRST FLOOR, U.N.O.
- ROOF ELEVATIONS VARY-SEE ROOF PLAN.
- SEE INDICATED SECTIONS AND DETAILS FOR FULL REQUIREMENTS AT EACH CONDITION.
- BOTTOM OF FOOTING SHALL ALWAYS BE MIN. 4'-0" BELOW FINISHED ADJACENT GRADE. SEE CIVIL AND STRUCTURAL.
- SEE EXTERIOR WALL INSULATION, AIR SEALING/CLEANING, AND ADDITIONAL WALL, FLOOR AND CEILING NOTES ON A3.1.

<h1>RED HAWK APARTMENTS</h1> <p>N. Parkview Drive & Blanche Drive Milton, WI 53563</p>	<h2>WORN JERABEK WILTSE ARCHITECTS, P.C.</h2> <p>401 West Superior St, Suite 400 Chicago, IL 60654 PH: 312.642.5587 FAX: 312.642.4189 www.wjwarchitecture.com</p>	<table border="1"> <tr> <th>NO.</th> <th>ISSUED FOR:</th> <th>DATE</th> </tr> <tr> <td>1</td> <td>100% DESIGN DEVELOPMENT</td> <td>08/12/19</td> </tr> <tr> <td> </td> <td> </td> <td> </td> </tr> <tr> <td> </td> <td> </td> <td> </td> </tr> <tr> <td> </td> <td> </td> <td> </td> </tr> <tr> <td> </td> <td> </td> <td> </td> </tr> </table>	NO.	ISSUED FOR:	DATE	1	100% DESIGN DEVELOPMENT	08/12/19													<h1>NOT FOR CONSTRUCTION</h1> <p>ILLINOIS PROFESSIONAL DESIGN FIRM LICENSE #184.002955 © 2019 WORN JERABEK WILTSE ARCHITECTS, P.C.</p>	<p>STAMP</p>	<p>PROJECT NUMBER: 18836</p>	<p>SHEET NUMBER: A4.2</p>
		NO.	ISSUED FOR:	DATE																				
1	100% DESIGN DEVELOPMENT	08/12/19																						
<p>DR. BY: CC & JMK</p>	<p>CK. BY: DZ</p>	<p>EXPIRATION DATE: 11.30.2020</p>																						