



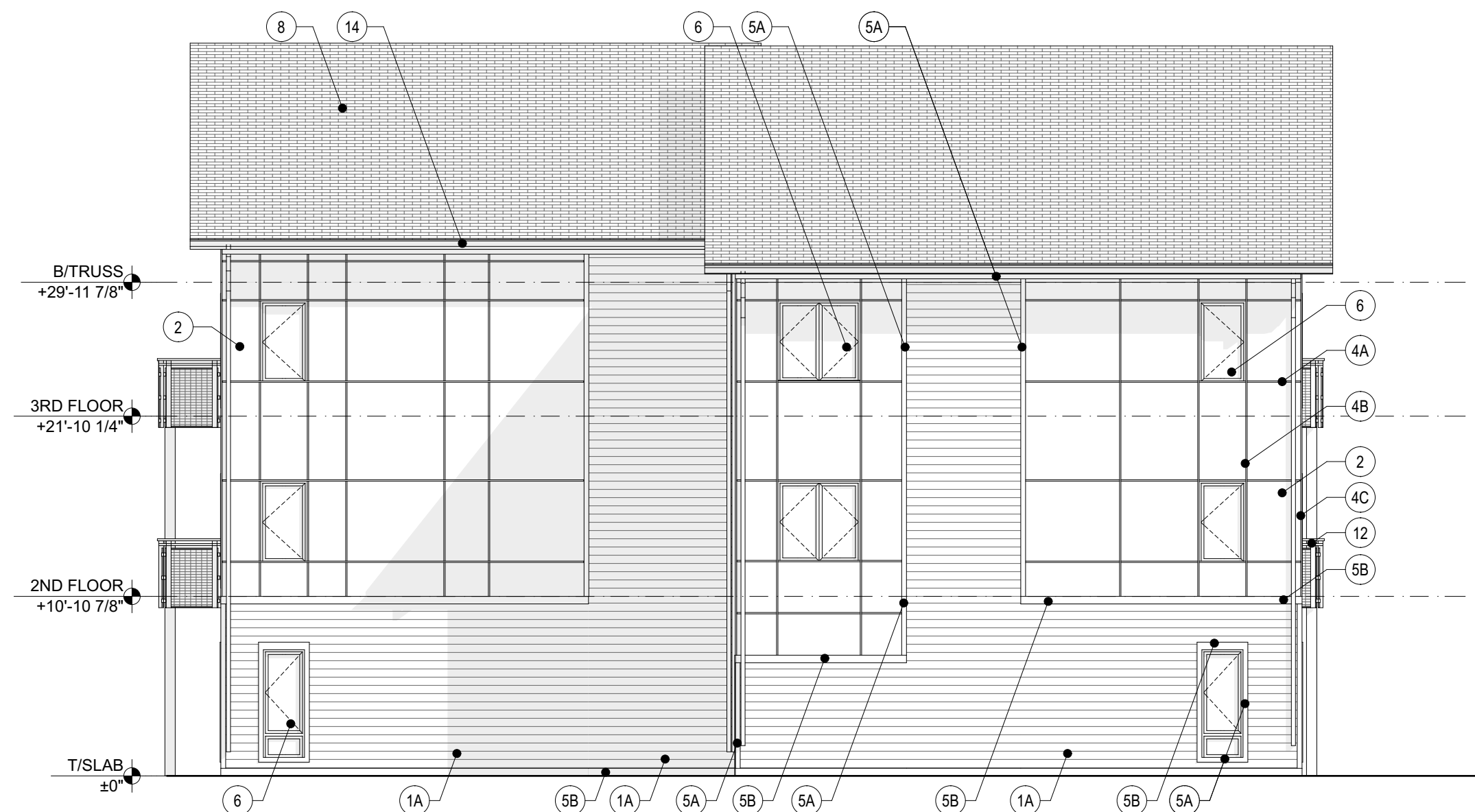
A FRONT ELEVATION (PARKING LOT SIDE)

SCALE: 1/8" = 1'-0"



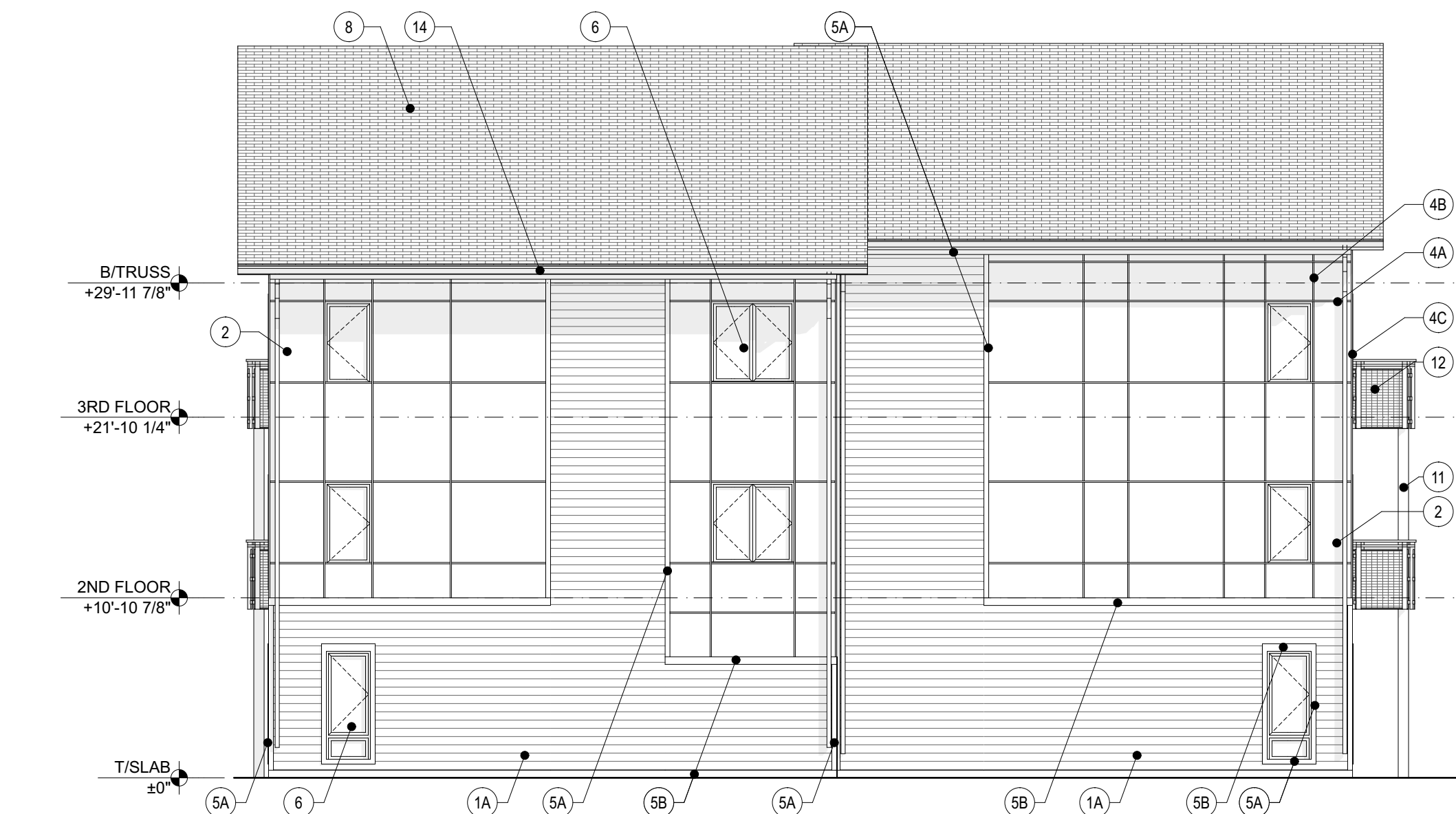
B BACK ELEVATION

SCALE: 1/8" = 1'-0"



C SIDE 1 ELEVATION

SCALE: 1/8" = 1'-0"



D SIDE 2 ELEVATION

SCALE: 1/8" = 1'-0"

ELEVATION MATERIAL KEY

- 1A - JAMES HARDIE "HARDIEPLANK" COLOR #1: FIBER CEMENT LAP SIDING, SMOOTH FINISH COLORPLUS, 4" EXPOSURE
- COLOR(S) BY ARCH. FROM MANUF. FULL RANGE
- 1B - JAMES HARDIE "HARDIEPLANK" COLOR #2
- SAME AS 1A - COLOR(S) BY ARCH.
- 1C - NICHHA "VINTAGE WOOD" COLOR #1
- COLOR(S) BY ARCH.
- 2 - JAMES HARDIE "HARDIEPANEL" COLOR #1: FIBER CEMENT PANEL SIDING, SMOOTH FINISH COLORPLUS
- COLOR(S) BY ARCH. FROM MANUF. FULL RANGE
- 3 - JAMES HARDIE "HARDIEPANEL - VERTICAL SIDING" COLOR #1: FIBER CEMENT PANEL SIDING, SMOOTH FINISH COLORPLUS
- COLOR(S) BY ARCH. FROM MANUF. FULL RANGE
- 4A - TAMLIN XTREME TRIM - ALUMINUM - HORIZONTAL (BRH) BEAD REVEAL
- COLOR BY ARCH FROM MANUF. FULL RANGE
- 4B - TAMLIN XTREME TRIM - ALUMINUM - VERTICAL (BRV) BEAD REVEAL - 1/2" REVEAL
- COLOR BY ARCH FROM MANUF. FULL RANGE
- 4C - TAMLIN XTREME TRIM - ALUMINUM - REVEAL OPEN OUTSIDE CORNER (XCC) - MINIMUM FACE
- COLOR BY ARCH FROM MANUF. FULL RANGE
- 5A - 3 1/2" FIBER CEMENT TRIM BOARD - JAMES HARDIE 5/4 "HARDIE TRIM" NT3 BOARDS, SMOOTH FINISH
- COLOR(S) BY ARCH. FROM MANUF. FULL RANGE
- 5B - 5 1/2" FIBER CEMENT TRIM BOARD - JAMES HARDIE 5/4 "HARDIE TRIM" NT3 BOARDS, SMOOTH FINISH
- COLOR(S) BY ARCH. FROM MANUF. FULL RANGE
- 6 - PRE-FINISHED CASEMENT WINDOW UNIT - SEE WINDOW SCHEDULE
- 6A - PRE-FINISHED FIXED WINDOW UNIT - SEE WINDOW SCHEDULE
- 6B - PRE-FINISHED CASEMENT WINDOW UNIT WITH FIXED UPPER TRANSOM - SEE WINDOW SCHEDULE
- 7A - PRE-FINISHED ALUMINUM STOREFRONT GLASS DOOR W/ SIDELIGHT AND TRANSOM
- SEE DOOR SCHEDULE
- 7B - INSUL. STEEL SERVICE DOOR
- SEE DOOR SCHEDULE
- 7C - PRE-FINISHED FIBERGLASS SLIDING ENTRY DOOR
- SEE DOOR SCHEDULE
- 7D - PRE-FINISHED FIBERGLASS ENTRY DOOR W/ SIDELIGHT
- SEE DOOR SCHEDULE
- 7E - PRE-FINISHED ALUMINUM STOREFRONT GLASS DOOR W/ TRANSOM
- SEE DOOR SCHEDULE
- 8 - ASPHALT SHINGLE ROOFING - COLOR BY ARCH. - SEE ROOF PLAN
- 9 - PRE-FINISHED GABLE VENT/MID-SLOPE VENT
- COLOR TO MATCH ASPHALT SHINGLE ROOFING
- 10 - PRE-FINISHED ALUMINUM GUTTER AND DOWNSPOUT - COLOR BY ARCH. - SEE ROOF PLAN
- 11 - PT WOOD COLUMN CLAD IN JAMES HARDIE "HARDIE PANELED" FIBER CEMENT PANEL SIDING, SMOOTH FINISH COLORPLUS
- SEE STRUCTURAL AND ARCHITECTURAL DETAILS - COLOR(S) BY ARCH. FROM MANUF. FULL RANGE
- 11A - STAINED WOOD COLUMN
- SEE STRUCTURAL AND ARCHITECTURAL DETAILS - COLOR(S) BY ARCH. FROM MANUF. FULL RANGE
- 12 - STAINED CEDAR BALCONY W/ INSET METAL WIRE MESH PANEL
- WOOD STAIN COLOR BY ARCH FROM MANUF. FULL RANGE - METAL MESH FINISH BY ARCH.
- 13 - WALL MOUNTED LIGHT FIXTURE - SEE ELECTRICAL & REFL. CEILING PLANS
- 14 - PREFINISHED METAL COPING, FASCIA, & TRIM - FINISH BY ARCH. FROM MANUF. FULL RANGE.
- 15 - PROJECTING CANOPY
- 16 - STAINED CEDAR TRELLIS
- 17 - CONCRETE LOW WALL WITH INTEGRATED STAINED CEDAR BENCH
- 18 - GARAGE DOOR
- SEE DOOR SCHEDULE
- 19 - RAIN CHAIN
- 20 - PAINTED ALUMINUM CHIMNEY FLUE PAINTED HEAT RESISTANT PAINT, COLOR BY ARCH. FROM MANUF. FULL RANGE.

GENERAL NOTES

1. ELEVATION TAGS INDICATE TOP OF LIGHTWEIGHT TOPPING ON FLOOR SHEATHING, T/PLYWOOD SHEATHING ON ROOF DECK, OR TOP OF SLAB ON GRADE AT FIRST FLOOR, U.N.O.
2. ROOF ELEVATIONS VARY-SEE ROOF PLAN.
3. SEE INDICATED SECTIONS AND DETAILS FOR FULL REQUIREMENTS AT EACH CONDITION.
4. BOTTOM OF FOOTING SHALL ALWAYS BE MIN. 4'-0" BELOW FINISHED ADJACENT GRADE. SEE CIVIL AND STRUCTURAL.
5. SEE EXTERIOR WALL INSULATION, AIR SEALING/CLEANING, AND ADDITIONAL WALL, FLOOR AND CEILING NOTES ON A3.1.

RED HAWK APARTMENTS

N. Parkview Drive & Blanche Drive
Milton, WI 53563

WORN JERABEK WILTSE ARCHITECTS, P.C.

401 West Superior St, Suite 400
Chicago, IL 60654

PH: 312.642.5587 FAX: 312.642.4189 www.wjwarchitecture.com

NO.	ISSUED FOR:	DATE
1	100% DESIGN DEVELOPMENT	08/12/19

NOT FOR CONSTRUCTION

ILLINOIS PROFESSIONAL DESIGN FIRM LICENSE #184.002955
© 2019 WORN JERABEK WILTSE ARCHITECTS, P.C.

STAMP	PROJECT NUMBER:	SHEET NUMBER:
	18836	A4.1
DR. BY: CC & JMK	CK. BY: DZ	

EXPIRATION DATE: 11.30.2020