



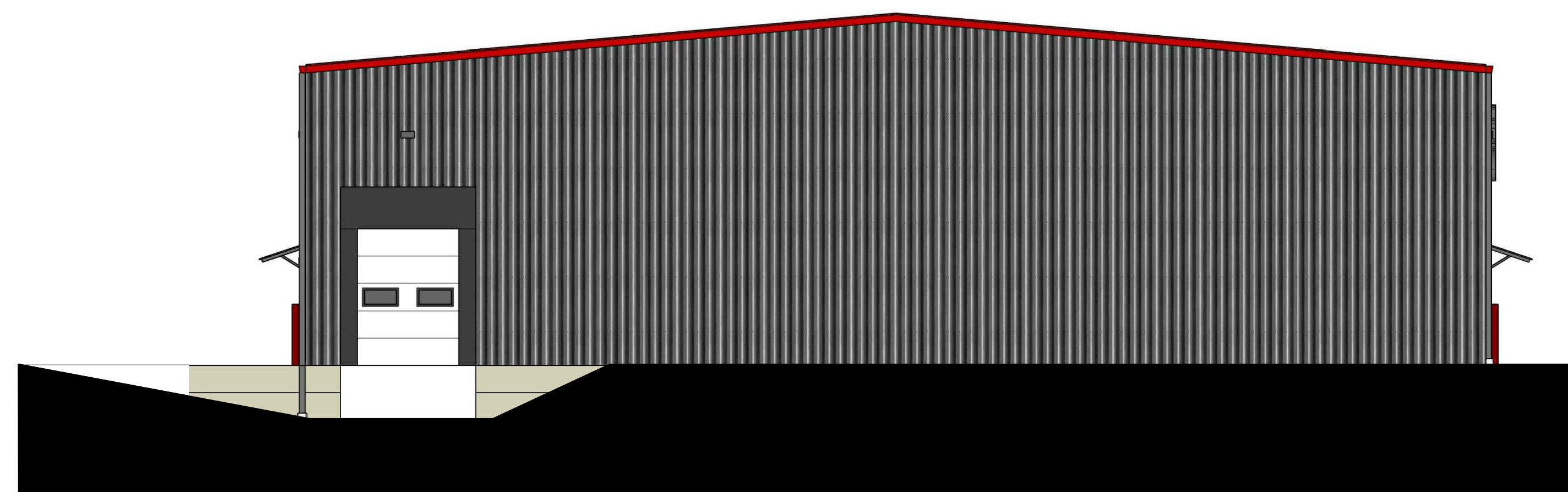
WEST ELEVATION 1/8" = 1'-0"



EAST ELEVATION 1/8" = 1'-0"



SOUTH ELEVATION 1/8" = 1'-0"



NORTH ELEVATION 1/8" = 1'-0"

KEYNOTES, DEMOLITION - ARCHITECTURAL

- ① CLEAR ANODIZED ALUMINUM WINDOWS WITH 1" GLASS PANELS AND INTEGRATED GRILLS  
GLASS COLOR - GREY
- ② DECORATIVE 2" STEEL CANOPIES  
HIGH PERFORMANCE FINISH, SILVER (TYP)
- ③ PREFINISHED ALUMINUM CAP - RUSTIC RED
- ④ OVERHEAD INSULATED GARAGE DOOR  
COLOR - WHITE
- ⑤ PREFINISHED METAL PANEL  
COLOR - CHARCOAL GRAY (TYP)
- ⑥ TENANT SIGNAGE BY OWNER
- ⑦ STEEL BOLLARDS WITH BOLARD COLORS'  
COLOR - RED
- ⑧ PREFINISHED FIBERGLASS MAN DOOR  
COLOR - WHITE
- ⑨ PREFINISHED CEMENT BOARD  
- NICHHA - ILLUMINATION SERIES - COLOR - RED

GENERAL EXTERIOR ELEVATION NOTES:  
 1. SEE GENERAL CONDITIONS FOR GENERAL INFO.  
 2. SEE DEMO ELEVATION PLAN FOR SELECTIVE DEMO.  
 3. SEE PROJECT SPECS THAT APPLY TO THESE NOTES.



ARCHITECTS  
 700 W. VIRGINIA STREET, SUITE 604  
 MILWAUKEE, WI 53204  
 414.277.8000  
 MADISENMAHER.COM

A NEW PROJECT FOR:  
**BADGERLAND DISPOSAL**

PUTMAN PARKWAY  
 MILTON, WI 53563



CLIENT:  
 HUGHES REYNOLDS GROUP LLC.  
 JASON HUGHES  
 #608.358.0984  
 DUSTIN REYNOLDS  
 #414.803.6866

Drawings and Specifications as instruments of service are the property of Madisen Maher Architects, whether the work for which they are made be executed or not and are not to be used or copied on other work except by written agreement with Madisen Maher Architects.

DATE	ISSUED SET
12/07/18	

Project Number	17-064
Start Date	1/17/17
Drawn By	RRT
Checked By	RRT
Scale	1/8" = 1'-0"

BUILDING A  
 ELEVATIONS  
**A2.01A**